

MCHENRY COUNTY MENTAL HEALTH BOARD

STUDY SESSION

January 22, 2007

Children Services Across Disabilities

Study Session Goals

- **Review**
 - Demographics
 - System of Care Principles
 - Funded Services
 - Three Year Plan Major Objectives
- **Discuss – Issues/Concerns**
 - Family
 - Youth
 - Providers

Number of Youth by Disability/Number Served

Disability	Amount Spent/ Child	Prevalence Rate	Prevalence Number	Number MHB Served/2006	% Different 2000 - 2006
SED	\$341	21%	22,680	4,557	+84%
DD	\$513	2%	2,160*	1,575	-3%
SA	\$466	10%	5,180**	1,215	+126%
TBI	\$2,584	.07%	75	28	+47%

Total # Youth 0 - 21 = 108,000

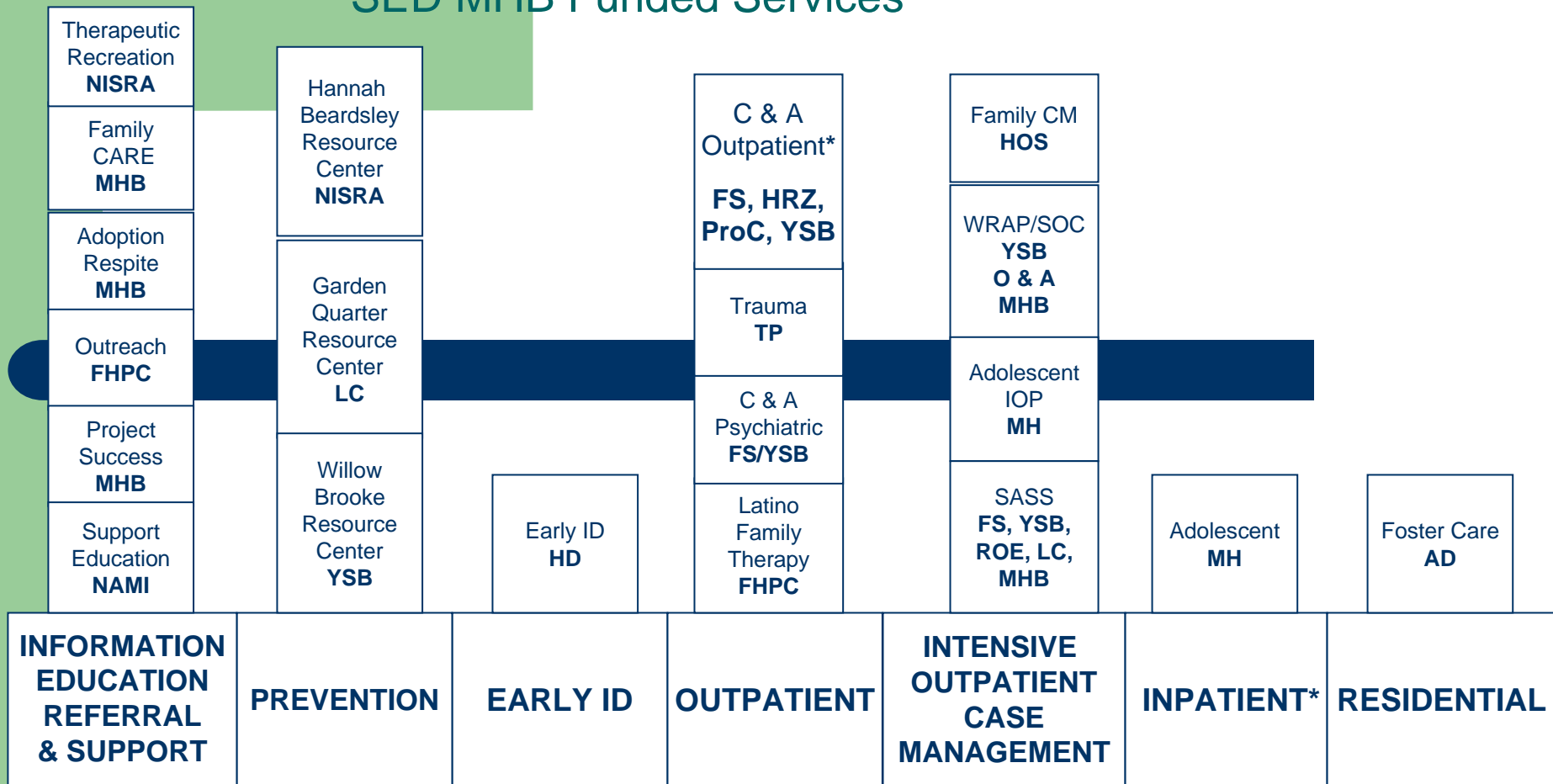
*Includes Health Dept. Early ID & Respite

**Ages 12 - 21

System of Care Principles

- **Family Driven** → **Planning**
 - **Youth Guided** → **Program Development**
 - **Culturally Competent** → **Service Delivery**
 - **Evidence Based** → **Advocacy**
 - **Sustainable** → **Evaluation**
 - **Financially**
 - **Structurally**
- **Governance**

SED MHB Funded Services



CRISIS LINE – EMERGENCY ONSITE – CENTEGRA MEMORIAL

AD – Allendale

FHPC – Family Health Partnership Clinic

FS – Family Service Community Mental Health Center

HD – Health Department

HOS – Home of the Sparrow

HRZ – Horizons

MH – Memorial Hospital

MHB – Mental Health Board

NAMI – National Alliance of Mental Illness

NISRA – Northern Illinois Special Recreation Ass’n.

O & A – Options and Advocacy

ProC – Professional Consultations

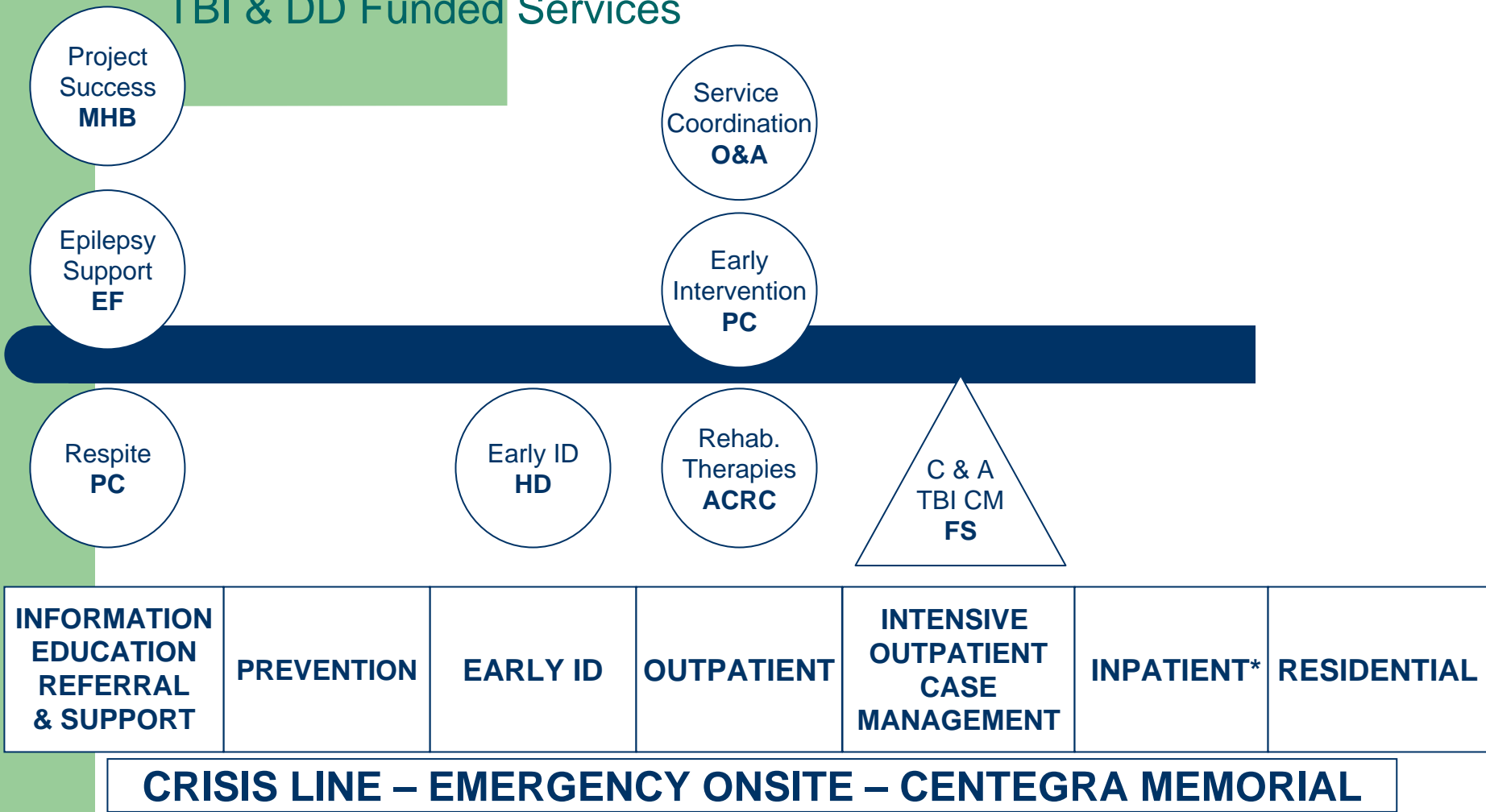
ROE – Regional Office of Education

TP – Turning Point

YSB – Youth Services Bureau

**Children & Adolescents by warrant of need.*

TBI & DD Funded Services



ACRC – Adult & Child Rehab Center

EF – Epilepsy Foundation

FS – Family Service Community Mental Health Center

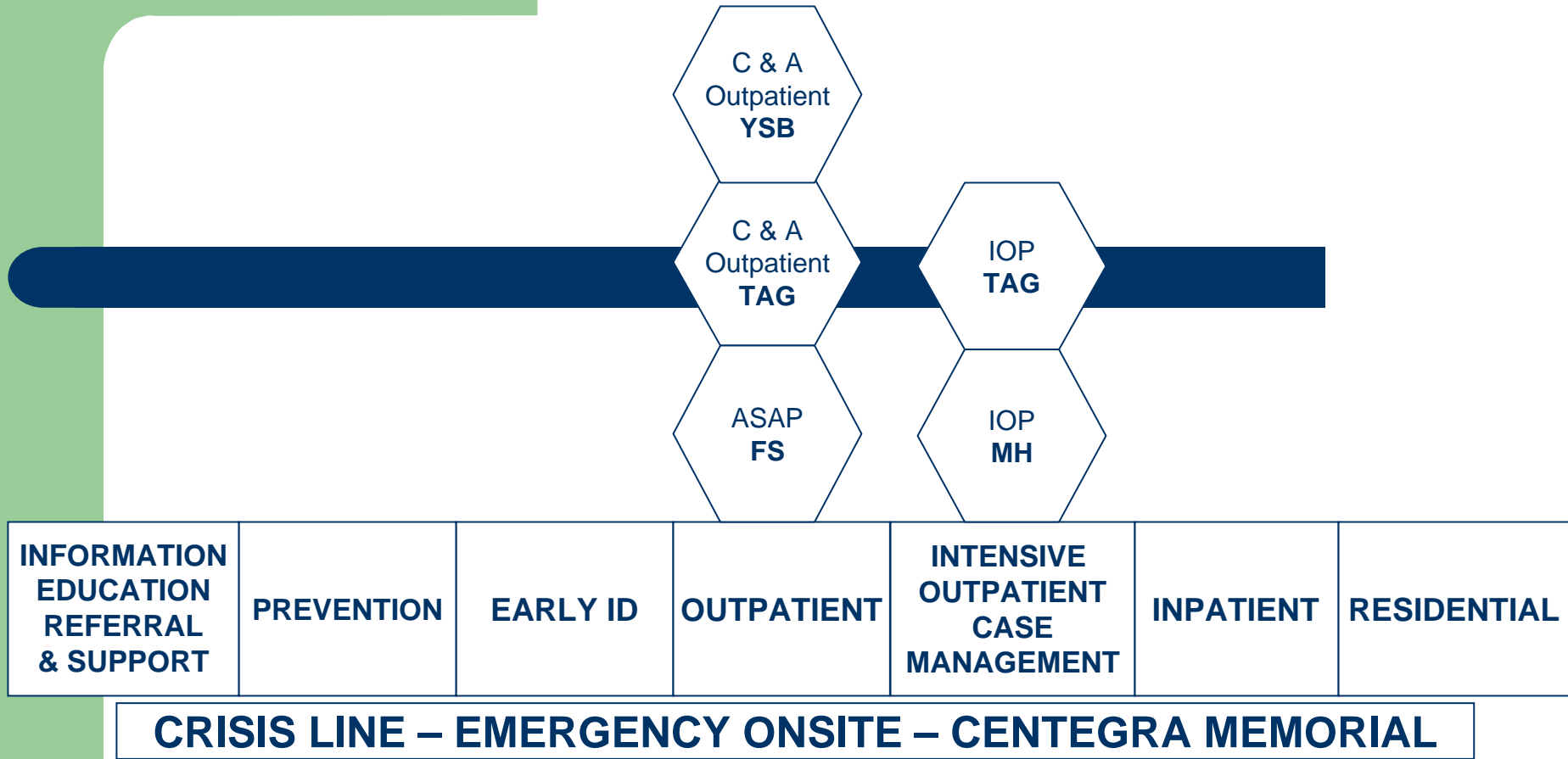
HD – Health Department

MHB – Mental Health Board

PC – Pioneer Center

O&A – Options and Advocacy

Substance Abuse MHB Funded Services



FS – Family Service Community Mental Health Center

MH – Memorial Hospital

MHB – Mental Health Board

TAG – The Advantage Group

YSB – Youth Service Bureau

Three Year Plan Major Objectives

- **Enhance capacity for SASS by restructuring and maximizing payor options.**
- **Enhance crisis response and deflect hospitalization through crisis bed/23-hour observation beds.**
- **Continue Family CARE project with a priority on: very young children, Latino youth, youth with co-occurring SED/SA, & older youth (18–22).**
- **Develop strategies to prevent and treat methamphetamine and heroin use.**

Three Year Plan Major Objectives

- **Explore impact of not having local children's (under 12) inpatient unit.**
- **Maintain and enhance early intervention services for all disabilities.**
- **Collaborate with our network to provide community education to reduce stigma of SED.**
- **Educate community on advantage of 377 Board for DD population.**